



Dimensions

- Stage 10 meters wide, 8 meters deep and 5 meters clearance till bottom of bridges

General

- Black box theaterhall (stage is lowest point)
- Loading/unloading stageleft
- Hall has bridges
- Curtains sides and back (midnight blue)
- No front curtain
- Stage floor hardwood parquet
- Marley floor black/white
- Open control cabin with good sight lines above grandstand
- Grandstand with 106 seats, fully retractable
- Two dressingrooms for 6 people (shower, toilet, refrigerator, coffee maker and kettle available)
- GreenGo wireless intercom set
- DALI2 hearing support

Maximum production sound

The Verkadefabriek uses volumes that allow visitors to attend a performance without the risk of hearing damage, without needing earplugs. The in-house technicians will use the average measured volumes in dBA below and intervene when these volumes are exceeded. To increase comfort, we offer visitors earplugs (free foam and better universal plugs with filters for a small amount) at performances that approach this limit. If the company expects the performance to be close to the limit, we would like to be informed of this. The average volumes below are used.

Maximum soundpressure measured over time	
without the use of hearingprotection	
Volume (dBA)	Duration in minutes
101	4
98	7,5
95	15
92	30
89	60
86	120

Sources:

https://www.cdc.gov/nceh/hearing_loss/what_noises_cause_hearing_loss.html

<https://www.klinktgoed-gehoorbescherming.nl/over-ons/wanneer-gehoorbescherming/>



Sound (more sound equipment available under 'Additional materials')

- PA
 - Top – 4x D&B YI7P
 - Sub – 2x D&B VG-SUB
- Monitor
 - 2x amp D&B E- pac (for E3, Max12 or other D&B speaker systems)
- Mixer
 - Allen&Heath SQ-6
 - 24 local XLR inputs
 - 3 local stereo line inputs (2x 6.3mm TRS jack & 1x 3.5mm stereo jack)
 - 14 local XLR outputs
- Infrastructure
 - 32x XLR around stage
 - Network connections all around
- Hearing support: Audio Mattijsen DALT2
 - Analog split on L+R (50% direct sound, 50% sound from microphones)
 - Possibility to send separate AUX
 - Beltpacks for visitors with headphones or local ear loop for T-stand
 - Fixed frequencies (note, these are **not** adjusted):
 - Main hall: **694.000 MHz**
 - Small hall: **690,000 MHz**

Lighting

- 80 dimmers each 2,5kw
- 30x 1kw PC with barndoors
- 10x 1kw profile Robert Juliat
- 8x ETC junior zoom 25-50
- 10x 500 watt fresnell with barndoors ADB
- 25x par CP 61/62
- 4x LED Horizon Chauvet CYC1
- Chamsys MQ250M console

Power supply

- 63 amp – 1 group (connection on stage)
- 32 amp – 2 groups in bridges
- Clean sound groups (16 amp)

Projection

- Panasonic PT-RZ690 DLP - 6000 ANSI lumens - 1920x1200 (connected to PTN HDBaseT extenders)
- Movable in bridge



Rigging

- Various lengths of X30V Prolyte Truss black (square)
- Various lengths of X30D Prolyte Truss black (triangle)
- 3 meter soft steels with various harps
- Sufficient rigging materials for safe lifting of our own inventory
- 8x Reutlinger with 4 mm steel cable (9 meters) on Doughty Clamp. WLL 65 KG
- 4 x 250 kg (8 meters/minute) chain hoists with control case

Psychosocial safety

At the Verkadefabriek we believe it is important that everyone has the safest possible working environment. This means that not only physical but also mental safety must be guaranteed. We turn away from 'locker room talk' and treat people equally in the way they prefer. If situations have arisen in which this safety was at stake, we would like to hear about it and we will do our best to prevent this in the future.



Additional materials (can be used anywhere in consultation)

Sound

- Mics + DI
 - 8x Shure SM 58
 - 2x Shure Beta 58
 - 4x Shure SM 57
 - 2x Shure Beta 52
 - 4x AKG C 451 B
 - 5x AKG CK 93
 - 2x AKG C 214
 - 1x AKG C 535 EB
 - 2x Sennheiser MD 421
 - 2x Neumann KM 184
 - 2x Crown PCC 160
 - 10x active DI (LA audio/Radial Engineering)
- Wireless microphones
 - 5x Handheld (Sennheiser EW 100 G3/EW 300 G2/EW 300 G3) + receivers
 - 8x Beltpack (Sennheiser EW 300 G2) + receivers
 - 8x Headset mic DPA 4066 (mini-jack/cream colored)
- Speakers
 - 2x D&B C6 top
 - 2x D&B Ci60 top
 - 1x D&B Ci90 top
 - 4x D&B E18 sub
 - 10x D&B Max12 monitor
 - 6x D&B E3 monitor
 - 2x Yamaha DXR10 active speaker
- Amps
 - 3x D&B D6
 - 3x D&B D12
 - 7x D&B E- pac

Lighting

- 80 dimmers each 2.5kW
- 30x 1kw pc with barndoors
- 10x 1kw profile Robert Juliat
- 8x ETC junior zoom 25-50
- 10x 500watt fresnel with barndoors ADB
- 25x par CP 61/62
- 4x LED Horizon Chauvet CYC1
- Chauvet MQ250M console



Power supply

- 63 amp distribution box
- 32 amp distribution box
- 16 amp distribution box
- Minimum length of power cable 10 meters
- 16, 32 and 63 amp power cables are limited in stock



DJ set

- 2x Pioneer CDJ 2000 Nexus media player
- 2x Technics SL-1200 mkII turntable (Earthquakers available)
- 1x Pioneer DJM 900 Nexus-II mixer

Projection

- Sony Alpha 51000+Sony Sel 16-50mm lens
- Magewell Video capture device HDMI-USB
- Sufficient PTN HDBaseT Extenders
- HDMI splitter
- HDMI audio extractor - Cinch,Toslink

Streaming set

- V-Mix PC
- 6x Canon N500 PTZ NDI
- 1x Canon RC-IP100 Ptz controller
- 4x Science Image NDI HD mini
- 3x Netgear M4250-10G2XF-PoE+ network switch
- 2x Streamdeck XL
- 3x Dell screen
- 1x Scarlett 18i20

Other

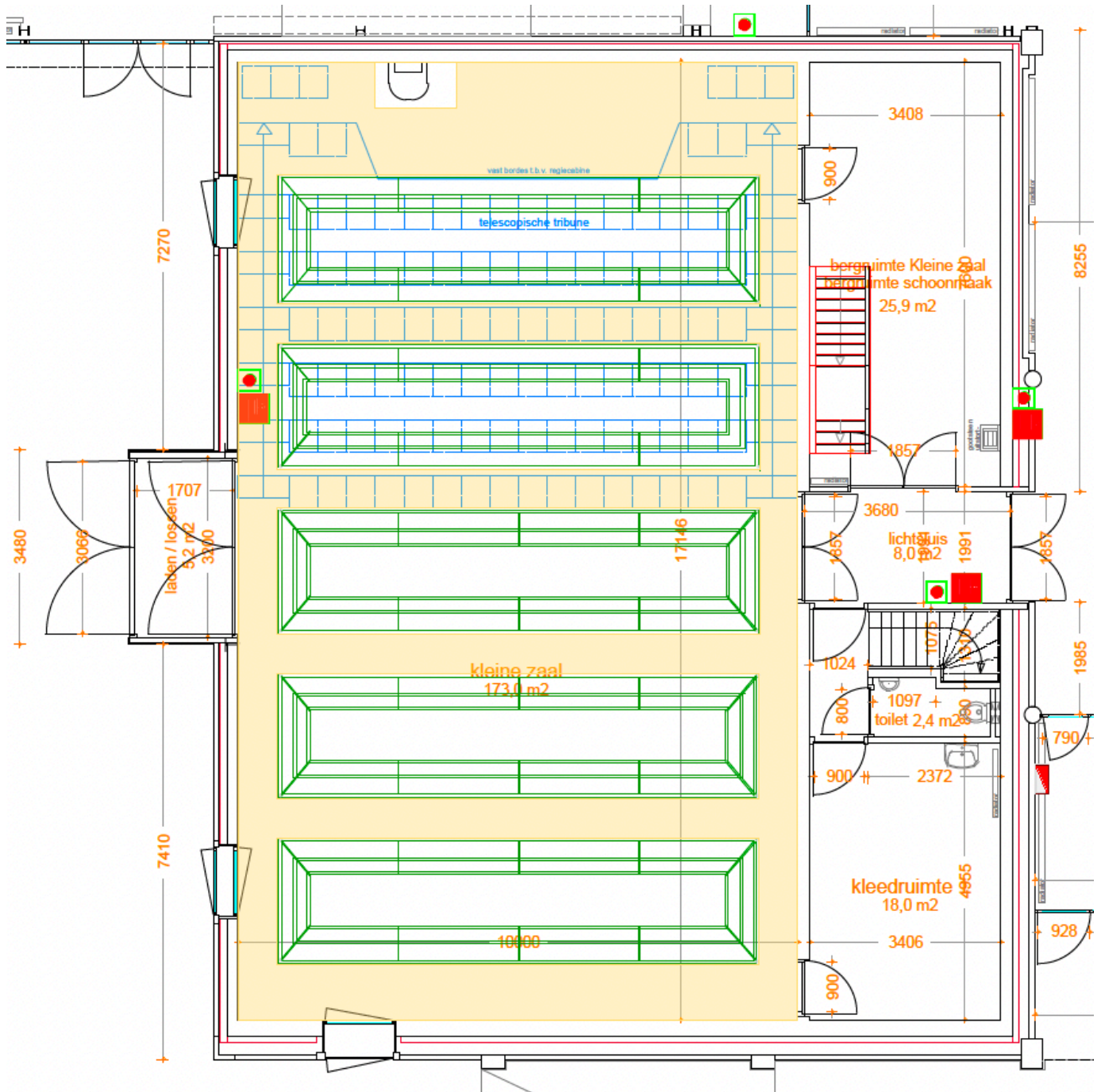
- Full HD stage monitor (for the presenter during presentations)
- Various screens on mobile tripod
- Various camera tripods
- Ron de Groot 2x1 stage elements with 20/40/60/80/100 cm legs
- 1x Yamaha U100 piano
- 2x Yamaha C3 grand piano



Floorplan

A DWG format of this drawing is available on request.

The green lines are our gridpipes (50mm), the bridges are indicated in yellow.





Loading and unloading instructions

