



### General

- Capacity
  - Max 99 seated
  - Max 130 combination sitting standing
- Equipped with fully equipped bar
- Furniture
  - 12 round tables with 5 chairs
  - 4 fixed semi-circular benches with an oval table
- The room can be set up in different configurations
- Changing room for 3-4 people (toilet, fridge, coffee maker and kettle available)

### Maximum sound production

The Verkadefabriek uses volumes that allow visitors to go to a performance without the risk of hearing damage, without the need for earplugs. The in-house technicians will use the following average measured volumes in dBA and intervene when these volumes are exceeded. To increase their comfort, we offer visitors earplugs (free foams and better universal caps with filter for a small fee) at performances that are close to this limit. If the company expects the performance to be close to the limit, we would like to be informed. The average volumes below are used.

Maximum soundpressure measured over time	
without the use of hearingprotection	
Volume (dBA)	Duration in minutes
101	4
98	7,5
95	15
92	30
89	60
86	120

Sources: [https://www.cdc.gov/nceh/hearing\\_loss/what\\_noises\\_cause\\_hearing\\_loss.html](https://www.cdc.gov/nceh/hearing_loss/what_noises_cause_hearing_loss.html)  
<https://www.klinktgoed-gehoorbescherming.nl/over-ons/wanneer-gehoorbescherming/>

## Sound (more sound material available under 'Additional materials')

- PA
  - Top 2x D&B E12
  - Sub 2x D&B C7sub
- Amplifiers
  - Top D&B D6
  - Sub D&B D12
- Monitor
  - 4x D&B E-pac (for E3, Max12 or other D&B speaker systems)
- Mixer
  - Allen&Heath SQ-6
    - 24 local XLR inputs
    - 3 local stereo line inputs (2x 6.3mm TRS jack & 1x 3.5mm stereo jack)
    - 14 local XLR outputs
- Infra
  - 24 x XLR around stage
  - Optional: Allen & Heath AB168 stagebox - 16 XLR inputs / 8 XLR outputs

## Lighting

- Various LED fixtures such as pars, fresnels and moving light. See lighting plot on pages 5 and 6 for a complete overview and information about the fixtures
- Control
  - 2 DMX universes
  - MA onPC with command wing and 24" touchscreen
  - 12 fixed light modes programmed on a Visual Productions Que-core
- The light in this room is hung in fixed positions and cannot be moved

## Power supply

- 3 clean sound groups (16A)
- Different 230V groups that can be patched to sockets all over the room

## Additional

Fixed secondary system with background music.

## Projection

- Panasonic PT-MZ680BEJ Laser projector - 6000 ANSI lumens - 1920x1200 - standard lens (connected to PTN HDBaseT Extenders)
- Fixed position in grid

## Psychosocial safety

At the Verkadefabriek, we believe it is important that everyone has the safest possible working environment. This means that not only physical but also mental safety must be guaranteed. We turn away from 'locker room talk' and treat people equally in the way they like. If there have been situations in which this safety was at stake, we would like to hear about it and will try our best to prevent this in the future.

## Additional materials (can be used anywhere in consultation)

### Sound

- Mics + DI
  - 8x Shure SM 58
  - 2x Shure Beta 58
  - 4x Shure SM 57
  - 2x Shure Beta 52
  - 4x AKG C 451 B
  - 5x AKG CK 93
  - 2x AKG C 214
  - 1x AKG C 535 EB
  - 2x Sennheiser MD 421
  - 2x Neumann KM 184
  - 2x Crown PCC 160
  - 10x active DI (LA audio/Radial Engineering)
- Wireless microphones (overview of used frequencies on page 7)
  - 10x Handheld (Sennheiser EW-DX SKM with MMD 935-1 BK head)
  - 10x Beltpack (Sennheiser EW-DX SK)
  - 10x Headset mic DPA 4066 (mini-jack/beige coloured)
  - 10x Sennheiser EW-DX EM 2 Dante receivers (2 channels per receiver)
- Speakers
  - 2x D&B C6 top
  - 2x D&B Ci60 top
  - 1x D&B Ci90 top
  - 4x D&B E18 sub
  - 10x D&B Max12 monitor
  - 6x D&B E3 monitor
  - 2x Yamaha DXR10 active speaker
- Amps
  - 3x D&B D6
  - 3x D&B D12
  - 7x D&B E- pac

### Lighting

- 2x Lightec SP-12 dimmer packs
- MA Dot2 console

### Power supply

- 63 amp distribution box
- 32 amp distribution box
- 16 amp distribution box
- Minimum length of power cable 10 meters
- 16, 32 and 63 amp power cables are limited in stock

### DJ set

- 2x Pioneer CDJ 2000 Nexus media player
- 2x Technics SL-1200 mkII turntable (Earthquakers available)
- 1x Pioneer DJM 900 Nexus-II mixer

## **AV**

- Sony Alpha 51000+Sony Sel 16-50mm lens
- Magewell Video capture device HDMI-USB
- Sufficient PTN HDBaseT Extenders
- HDMI splitter
- HDMI audio extractor - Cinch,Toslink

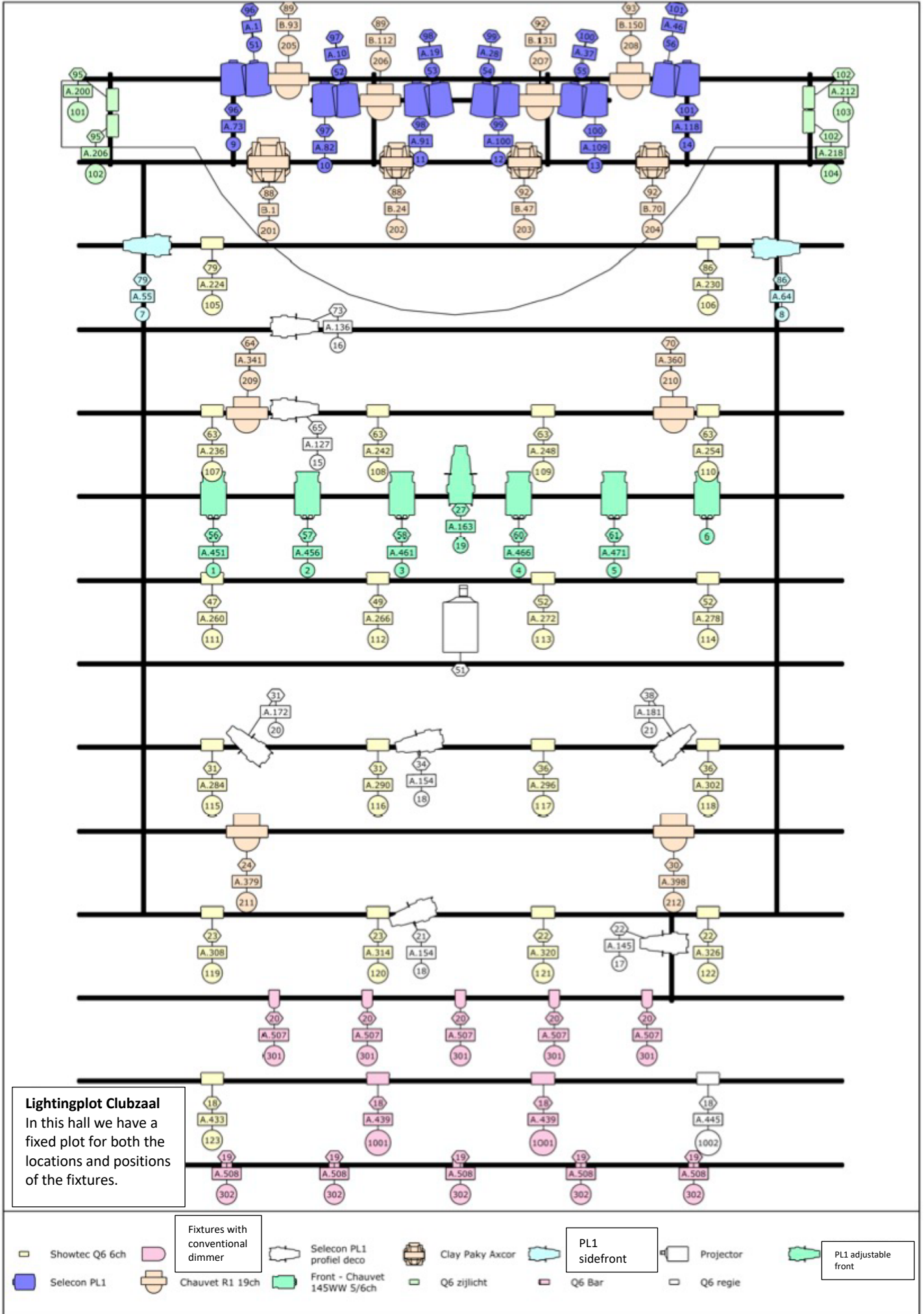
## **Streaming set**

- V-Mix PC
- 6x Canon N500 PTZ NDI
- 1x Canon RC-IP100 Ptz controller
- 4x Science Image NDI HD mini
- 3x Netgear M4250-10G2XF-PoE+ network switch
- 2x Streamdeck XL
- 3x Dell screen
- 1x Scarlett 18i20

## **Other**

- Full HD stage monitor (for the presenter during presentations)
- Various screens on mobile tripod
- Various camera tripods
- Ron de Groot 2x1 stage elements with 20/40/60/80/100 cm legs
- 1x Yamaha U100 piano
- 2x Yamaha C3 grand piano

# VERKADEFABRIEK HOUSERIDER CLUBZAAL (version May 2025)



## Fixture overview

### MA-fixture-ID 1 and 6:

Chauvet Ovation F-145WW

DMX Profile: 5 channel

[Link to datasheet](#)

### MA-fixture-ID 2 thru 5:

Chauvet Ovation F-145WW v2

DMX Profile: 6 channel

[Link to datasheet](#)

### MA-fixture-ID 7 thru 21 + 51 thru 56:

Selecon PL1 LED Fresnel/profile

DMX Profile: 8-bit mode (9 channels)

[Link to datasheet](#)

### MA-fixture-ID 101 thru 123 + 1001 and 1002:

Showtec Power Spot 9 Q6 TourDMX Profile: 6 channel (RGBWA-UV)

[Link to datasheet](#)

### MA-fixture-ID 201 thru 204:

Clay Paky axcor spot 300

DMX Profile: 23 Channels

[Link to datasheet](#)

### MA-fixture-ID 205 thru 216:

Chauvet Rogue R1 Wash

DMX Profile: 19 Channels

[Link to datasheet](#)

## VERKADEFABRIEK HOUSERIDER CLUBZAAL (version May 2025)

### Fixed frequencies wireless receivers

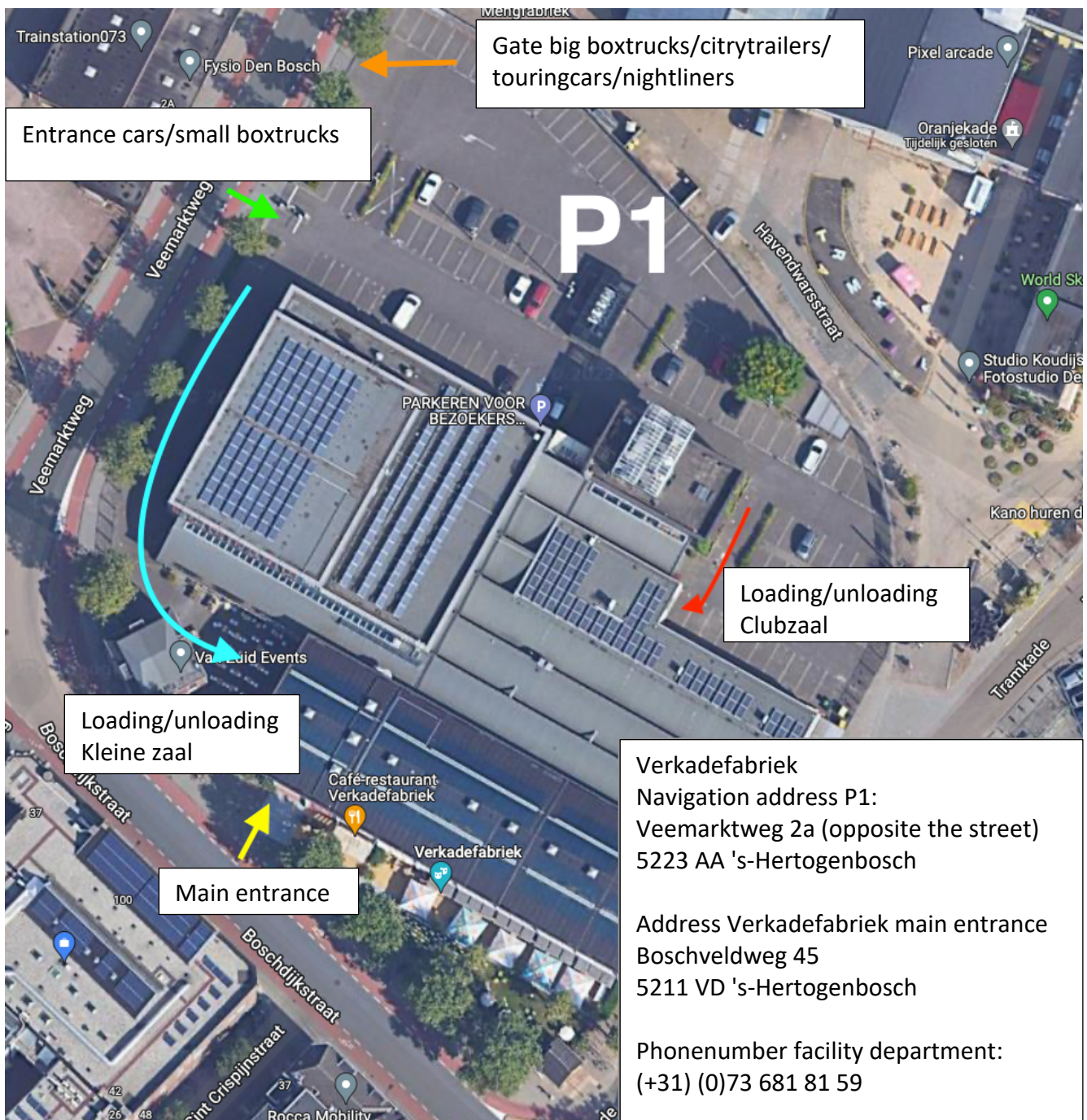
Please note: The frequencies on our receivers will **not** be changed.

Flexible set			Clubzaal			Spare freq	
Receiver	List User Ch	Frequency	Receiver	List User Ch	Frequency	No.	Frequency
1	1	582,1	1	1	536,2	1	579,1
2	2	582,7	2	2	536,8	2	579,7
3	3	583,3	3	3	537,4	3	580,3
4	4	583,9	4	4	538	4	580,9
5	5	584,5	5	5	538,6	5	581,5
6	6	585,1	6	6	539,2	6	594,1
7	7	585,7	7	7	539,8	7	594,7
8	8	586,3	8	8	540,4	8	595,3
9	9	586,9				9	595,9
10	10	587,5				10	596,5
11	11	588,1	<b>Cinema 1</b>				
12	12	588,7	Receiver	List User Ch	Frequency	<b>Hearing support</b>	
13	13	589,3	1	1	521,2	Hall	Frequency
14	14	589,9	2	2	521,8	Grote zaal	694
15	15	590,5	3	3	522,4	Kleine zaal	690
16	16	591,1	4	4	523		
17	17	591,7	5	5	523,6		
18	18	592,3	6	6	524,2		
19	19	592,9	7	7	524,8		
20	20	593,5	8	8	525,4		

Frequencies in MHz \*1000

# VERKADEFABRIEK HOUSERIDER CLUBZAAL (version May 2025)

## Loading and unloading instruction



Please note! As of March 1st 2025, the city center of 's-Hertogenbosch has become a zero-emission zone. This also applies to the Verkadefabriek. A transitional arrangement for cleaner vans and trucks applies until 2030. For more information and a license plate check, go to <https://www.s-hertogenbosch.nl/ondernemer/milieu-en-afval/milieuzone-zero-emissie-zone/>